

Temporal Shifts in Understanding of Privacy: Perspectives of House Users in Baghdad During Two Different Periods: Case Studies in Selected Neighborhoods

Anna Bassim Mohamed Salih  *, Ghada Al-Slik  

Department of Architecture Engineering, College of Engineering, University of Baghdad, Baghdad, Iraq

ABSTRACT

The Dwelling is a Fundamental issue related to human beings; throughout time, man has always had to dwell in a place and build his house. Due to different styles and typologies appearing all over the world, all containing the character of privacy as the main element of human life in their dwellings. The present study aims to investigate the temporal shift in understanding privacy during the 20th and 21st centuries in Baghdadi houses, and what are the physical elements that are related to the meaning of privacy. The research methodology analyzed the concepts of privacy to extract the research indicators to be applied to (49) samples of individual houses in selected neighborhoods in two different periods. The data was collected from visual surveys and checklist observations that the researchers conducted with 90 Iraqi residents living in those design types and styles. The results indicated that privacy resembles a balanced physical treatment interrelated to social considerations planning, ranging from space designs to the details, which results in organizing the individual's interactions with the family and then the family's interaction with others, mainly the neighbors. Each one of them has its own design and planning requirements. The results showed increased privacy features and approaching (isolation) in the contemporary Baghdadi house (after 2003) due to the change in the social nature of neighborhood members and a decreased sense of security. The research noted that there are planning indicators associated with an increased sense of privacy, such as the width of the residential street, the residential nature of the neighborhood, and the nonexistence of a neighbor across from the house.

Keywords: Baghdadi house, Dwelling, Privacy, Single-family house, Social isolation.

1. INTRODUCTION

Dwelling is a concept related to human beings. Through time, man has always had to dwell in different places and build his own house that appeared in various styles and typologies. According to this importance, many researchers discussed the dwelling and how man built his first shelter to provide privacy. Privacy is one of the basic human needs, and there are

*Corresponding author

Peer review under the responsibility of University of Baghdad.

<https://doi.org/10.31026/j.eng.2026.06.04>



This is an open access article under the CC BY 4 license (<http://creativecommons.org/licenses/by/4.0/>).

Article received: 16/12/2025

Article revised: 22/04/2026

Article accepted: 22/05/2026

Article published: 01/06/2026



many studies discussing the concept of privacy and its relationship with humans in different fields. **(Al-Hinkawi and Yousif, 2004)** explained the meaning of privacy in various fields, such as the "social-psychological fields", like what **(Hall, 1959; Coffma, 1963)** mentioned that the need for privacy is general, comprehensive, and contributes to satisfying human needs, but the form in which this need is expressed and the mechanism for obtaining it appear in different forms in urban societies. Hall emphasized the role of distance in regulating individuals' privacy .

(Sommer, 1969) proposed the possibility of achieving privacy through organizing distances between individuals; he introduced the concept of "personal space", which is characterized by its flexible and changing dimensions, socially and culturally, depending on the behavioral pattern and the type of relationship between individuals. **(Westin, 1970)** In his study, he explained privacy as the individual's right to decide the information he would like to share with others about himself. It is the individual's voluntary or temporary withdrawal from society using physical means. Privacy has an important role in the individual's relationship with the group and society. And in Newman's study, he presented the idea of "defensible space", based on a spatial theory with a general biological basis.

On the other hand, many researchers discussed the concept of privacy at the level of "behavioral studies", like Rapport's study, which defined privacy as controlling unwanted interaction with others and establishing boundaries between public and private property through various laws and symbols confirming the level of desire for interaction. The degree of privacy represents part of civilizational-cultural influences, as it affects the organization of the interior of the residential unit. Rapport developed methods for achieving privacy by-laws, avoidance, gradualism, behaviors, and psychological tools, organizing activities in time and space, separation of spaces, and using physical elements **(Al-Hinkawi and Yousif, 2004; Rapport, 1969)**. Privacy was defined as providing personal freedom to the individual to carry out activities without the interference of family members. The mechanisms for regulating privacy are verbal and non-verbal behaviors, and environmental factors, including the definition of personal space, the use of spaces, social customs and traditions related to individual behavior, and the design of the built environment **(Al-Hinkawi and Yousif, 2004; Eyüce, 2012)**

In the architectural field, the word privacy **(Tomah et al., 2016)** has several different connotations. According to some architectural designers, there must be ample space to create a psychological, physical, or visual separation. One of the studies focused on a person's or a group's capacity to manage their visual, auditory, and olfactory communication with others. Others define it as employing a variety of methods to manipulate interactions to create the intended interactions according to people's preferences. Thus, privacy fulfills three primary purposes, which are as follows: restricting social interaction, creating strategies to control that interaction, and developing and maintaining self-identity. As mentioned by **(Qawasmeh, 2019)**, depending on one of the studies to achieve privacy in architecture appropriately, it must be dealt with balance within an appropriate equation and with specific dimensions and elements, as seen in **Fig. 1**.

On the other hand, there are local studies that discussed the concept of privacy in the residential environment like **(Fuchs, 2011; Al-Hankawi, 1993)** study about the impact of the characteristics of spatial organization in the urban fabric on social interaction. The researcher explained that the integration of the space system between internal and external spaces, which organizes the meeting surfaces of residents with strangers and defines public and private spaces, affects social interaction. The study of **(Al-Ani, 1995)** studied the

characteristics of the spatial organization of the dwelling and its relationship to the psychological characteristics of the residents indicating that the strength of the relationship between the inside and outside of the dwelling reflects the fact that the use of the outer space as a private space and the interest in it reflects the tendency of people to enhance the phenomenon of the dwelling to arouse impressions among others, therefore strengthening the relationship between the interior and the exterior reflects the human tendency to strengthen the connection between himself and society.

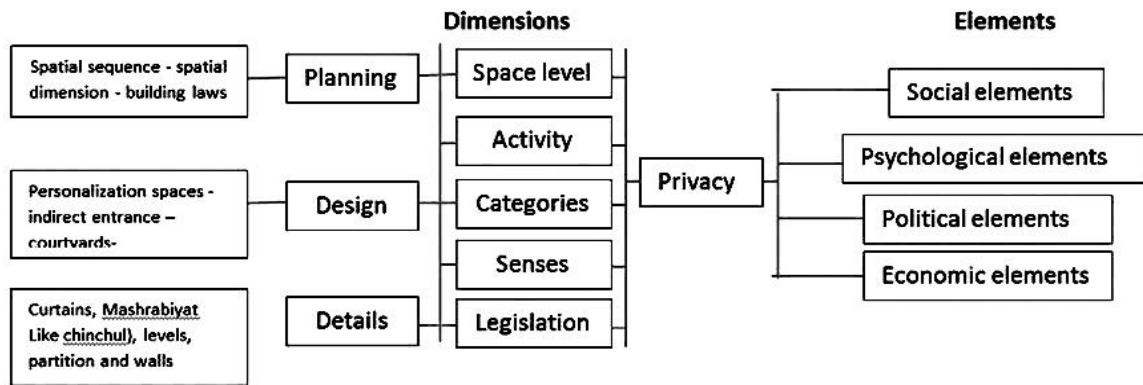


Figure 1. The Equation for Achieving Privacy in Architecture (Qawasmeh, 2019).

Then, (Youssef, 2001; WANG et al., 2019) studied the duality of private and public in Iraqi dwellings, demonstrating its potential to define residential space, distinguish the degree of privacy, and define it through visual, functional, and spatial relationships. Privacy and isolation in a residential environment are determined by the structural characteristics that achieve privacy and isolation in residential environment (Al-Hinkawi and Yousif, 2004).

The study of (Qaradagy, 2021; Post, 2000) studied privacy in traditional residential houses in Sulaymaniyah city, which has a different societal and geographical nature than the city of Baghdad. The research concluded that the traditional residential patterns common in the city of Sulaymaniyah have clearly influenced the mechanisms for dealing with elements that were previously used to provide visual privacy. Finally, the study of (Al-Thahab et al., 2014; Al-Saaidy and Alobaydi, 2021) on how the physical characteristics of the architectural and urban fabric are determined by factors such as privacy and daily life. This article examined how these factors affect the architecture of houses and traditional communities in modern-day Iraqi cities. Using the idea of the social sphere as an investigative tool to explore the concept of social space in Iraqi houses and local communities, it shows the link between socio-cultural features of public and private realms (Mahalla).

According to what is mentioned above, the research argues that privacy is the physical treatment at the planning, design, and details levels to organize the individual's interactions with others, which is his interaction with the family internally and externally with the neighbors. Because privacy links to human social, psychological, and behavioral needs on the one hand, and humans build their dwelling architecture on the other hand, the physical elements of architecture must contain those human needs for achieving privacy.

There will be privacy treatments at the planning level that are concerned with the relationship between the house and its surroundings as a neighborhood, and the design treatments that are at the level of the house itself. The physical therapies at the detailed level are intertwined between the planning and design aspects to regulate the individual's relationship with the neighborhood on the one hand and the individual interaction with the



family on the other hand. So, the detailed treatments overlap between the design and planning levels. In the following **Table 1**, the research will summarize the major indicators of privacy in the place of residence and their codes.

Table 1. The major indicators of privacy in the place of residence and its codes.

Type of privacy	Major division	Indicators
Physical privacy 1.X	Planning level 1.X	Mass-space relationship between the house and its surroundings 1.1.X The boundaries as a main entrance and external fence treatment 1.2.X The details on the planning level, like the location of windows 1.3.X The orientation 1.4.X
	Design level 2.X	Arrangement of spaces inside the house\ on horizontal and vertical levels, as private and public spaces 2.1.X Separation of space depending on gender, parents, and children 2.2.X Functional definition of spaces 2.3.X Personalization 2.4.X Personal space, zone, and time 2.5.X The entrance 2.6.X The details in the design level, such as curtains, partitions, and walls, the color of glass, etc. 2.7.X

Previous studies have identified the importance of privacy and its relationship to humans and their homes. Therefore, this research aims to study privacy in a group of houses in Baghdad according to the two most prevalent architectural styles: the first is the modern house, which began to be built in the 1950s, and the contemporary house, which was built after 2003. Current research aims to find answers to the following questions:
 What are the characteristics of privacy from the perspective of Iraqi residents living in single-family houses in Baghdad during the 20th and 21st centuries?

2. RESEARCH METHODOLOGY

The research methodology consists of several steps:

1. The concept of dwelling, house, and home, then explain the case study about the Baghdadi house and its characteristics.
2. Conducting the field survey and checklist observation with residents of modern houses built before 2003 and contemporary houses built after 2003 as a case study.



3. Analyzing the data from field surveys and checklist observations .
4. The analysis was supported statistically by using the SPSS program, using the Binary Logistic Regression Test, with a P value ≤ 0.05 .

2.1 Baghdadi House as a Case Study

At the beginning of the research scope, the research distinguishes among the terms of dwelling, house, and home. Dwelling is the act of residing and living in a place (to dwell), embodying human existence and encompassing various physical structures. A house is a defined and designated physical space for residence, where a person or family lives. It is physically defined by its physical elements, such as the roof, walls, and floors. A house includes various physical structures, serving as a shelter or a palace to provide protection and accommodation for its inhabitants. Home is the concept most closely associated with humanity and the broadest of all, representing the deep connection between a person and their dwelling. It encompasses both the physical and non-physical dimensions of human existence. According to the aim of the research, to specify the physical elements that are related to the meaning of privacy, the research will focus on the Baghdadi house as a case study **(Salih and Al-Slik, 2025)**

The traditional Baghdadi house went through several changes due to modern influences. The outward styles began with roofing the central courtyard and the emergence of the modern house, which reached its peak in the 1960s and 1970s of the twentieth century. According to local researchers, the 1960s and 1970s of the 20th century were important years in the history of contemporary Iraqi architecture. In the 1960s, the emergence of new residential neighborhoods with professional groups as government employers. Reflecting the social and cultural level of each social group. **(Alobaydi et al., 2016; Huweish, 1988; Akram et al., 2015; Khasir and Nasser, 2010)**. The area of these residential plots of modern houses is 300-600m², and some plots are more than that, according to the building codes of Baghdad Municipality; the building ratio of these lands (300-600m²) is 60-65%. The typology of the plan, as mentioned by **(Al-Beirouti, 1992; Khafaf, 1992)**, is a residential block settled in the back with the garden in the front, emphasizing openness to the outside and the tendency toward reduction and simplicity. Houses in the 1960s and 1970s usually contained two entrances for the family and the reception room, and then gradually moved towards more private spaces. Houses built in the 1960s were designed as modern typological houses, which continued to change in the 80s and 90s due to difficult political and economic conditions **(Kuba and Al-Slik, 2011; Khayat and Khaznadar, 2010)**. The modern example is shown in **Fig. 2**.

The modern style of the Baghdadi house continued, but it witnessed changes in its style, building materials, scale, and details in the nineties of the twentieth century. The modern house in the 1980s and 1990s of the twentieth century witnessed a structural modification that included construction, adding, modifying, and sorting parts of the large areas as new houses, with changes occurring in finishing the facades with various building materials. **(Kuba, 2011; Alobaydi, 2017; Gupta, 2019; Salih and Al-Slik, 2025)**.

After 2003, improving salaries for government jobs led to an improvement in income and living standards for the middle class. The features of the security turmoil included various aspects of life in the city of Baghdad, and the violence depleted the Iraqi-educated middle class through what that class was exposed to. After 2003, most of the modern Baghdadi houses were divided into more houses, and as a result of the small spaces, the coverage rate increased. Many open spaces, such as gardens and outdoor spaces, were eliminated and

limited to service spaces with very small areas for lighting and ventilation. The sizes of modern houses diversified after 2003, becoming 100-150 square meters, then gradually decreased to very small houses that reached 36 square meters and consisted of three floors, so new planning indicators appeared (Alsaffar and Alobaydi, 2023; Pieri, 2005), as can be seen in Fig. 3.

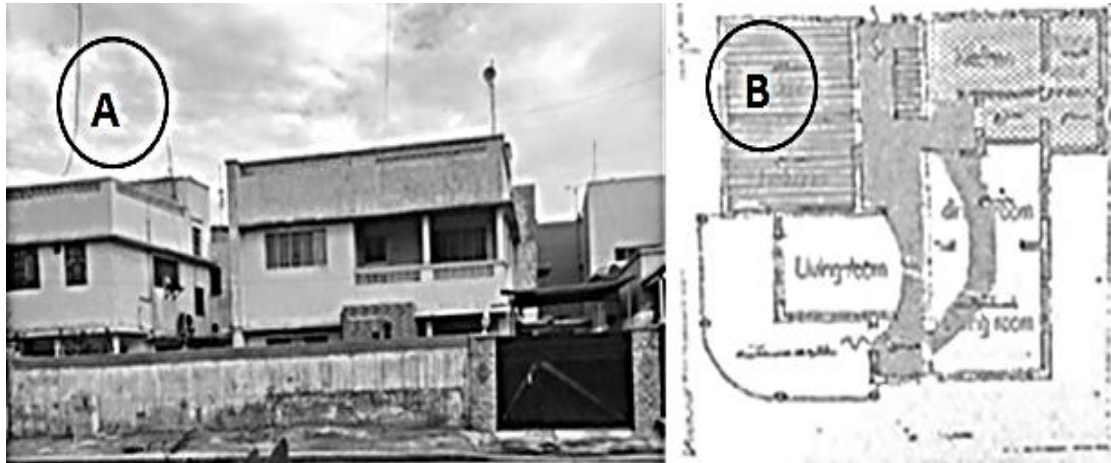


Figure 2. A. modern Baghdadi house was built in the 1970s. B. Example of a plan of a modern house in Baghdad by (Al-Beirouti, 1992)

The residential neighborhoods planned in Baghdad also witnessed many phenomena of transformation of their modern residential house into other functions like schools, hospitals, or companies. This contributed to the social and physical disintegration of the residential neighborhood. (Ali and AL-Kindy, 2021; Al-Sadkhan and Aladdin, 2013; Alobaydi et al., 2024). After 2003, modernly planned residential neighborhoods began to disintegrate, and schools and businesses emerged, some linked to the government's efforts to convert certain streets into commercial areas, and others not. Furthermore, most residential areas in Baghdad witnessed the emergence of informal settlements housing over a million people, and these settlements significantly impacted the quality and prices of residential areas. (Ali and AL-Kindy, 2021; Al Ishaqee and Albazaz, 2019).

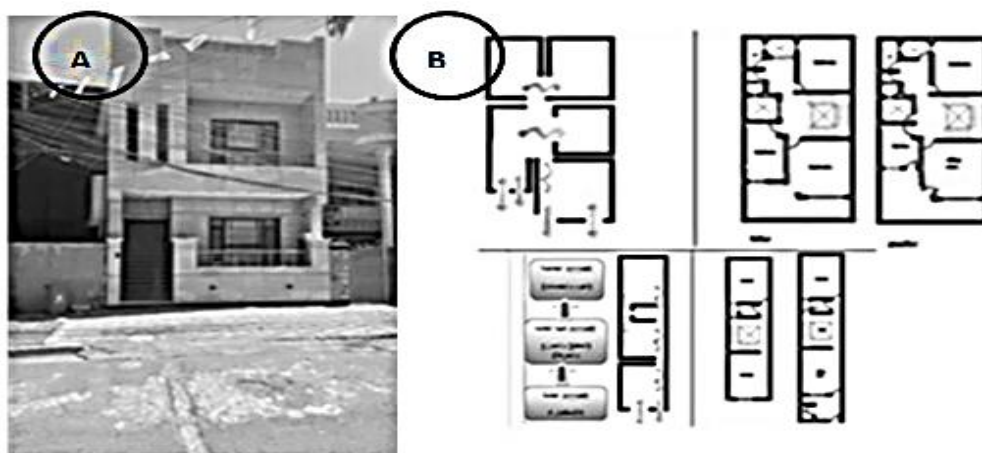


Figure 3. A. contemporary Baghdadi house was built after 2003. B. Example of a plan of a contemporary house in Baghdad (Salih and Al-Slik, 2025)



Finishing materials in residential and public facade buildings have changed, witnessing the phenomenon of alienation in architecture. As well as the number of residents living in informal settlements exceeded three million. (Al-Assadi et al., 2022; Dhumad and Khaza'al, 2017; Dhumad., 2023).

2.2 The Field Survey and Checklist Observation

The field research included selecting 90 residents, diverse in their educational levels, male and female, over 18 years old, and living in (49) houses, as modern houses were built before 2003, and contemporary houses were built after 2003. The selected sample was identified as having a good economic level, with an average income between 1.5-2 million Iraqi dinars, and they are educated individuals. 51% of the residents live in modern houses built between the 1950s and 1990s, while 49% of them live in contemporary houses built after 2003. The selected samples were from the neighborhoods of (Yarmouk, Mansour, Saydiya, and Adl) on the Karkh side of Baghdad and from the areas of (Palestine Street, Waziriyah, Shaab, and Sadr City) on the Rusafa side of Baghdad.

Field research includes several steps:

A- Ask the residents: Do you feel privacy in your house?

Yes, No, to a certain extent .

B- Applying a checklist observation based on dialogue with the residents and noting the existence of indicators in the house.

C- Ask the residents: Are there other factors that enhance your sense of privacy?

The research included analyzing the residents' answers and supporting them by observing the presence and absence of indicators in the houses under study.

3. RESULTS AND DISCUSSION

This part will demonstrate the findings of the indicators of privacy at the planning, design, and detail levels. The results were 51% of the residents live in modern houses built between the 1950s and 1990s, while 49% of them live in contemporary houses built after 2003. The female was 66%, and the males were 34%, the age average 20-40 years was 34%, 41-60 years was 28%, and 61-80 years was 34% and finally, more than 80 years old was 3%. The selected samples were from the neighborhoods of (Yarmouk, Mansour, Saydiya, and Adl) on the Karkh side of Baghdad and from the areas of (Palestine Street, Waziriyah, Shaab, and Sadr City) on the Rusafa side of Baghdad. According to the data analysis from the checklist observation and field survey of the residents' houses, the results of feeling privacy were that 60% felt privacy in their houses, 37% felt privacy to a certain extent, and 3% did not feel private, as can be seen in **Fig. 4**.

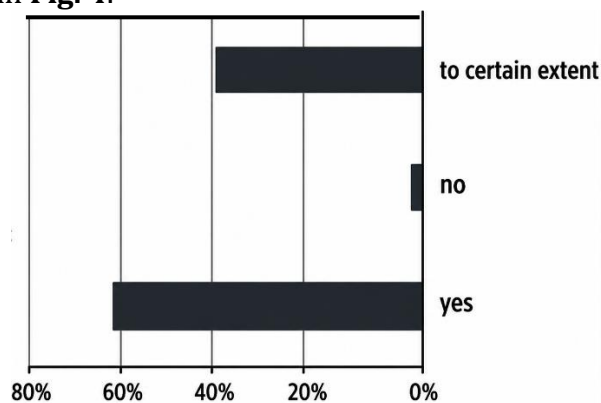


Figure 4. Distribution of the participants' responses to reflect their sense of privacy

First: The results of the planning level showed that 64% of the residents feel in privacy by mass-space relationship (1.1.X) as a separation between the house as a private space and the street as a public space. Staying away from the street represented by residents living in the modern house styles before 2003 is one of the main indicators of feeling privacy, and how the proximity to the street was an indicator of a lack of sense of privacy in residents of the contemporary small houses that were built after 2003. The results of the boundaries as a main entrance and external fence treatment showed that the field survey showed that the residents were interested in defining the external boundaries that separate the private from the public, even though they did not indicate them. The field research showed that the high external walls and their treatment were 64%. The field research also noted that the external solid doors that do not contain openings were 71%. The orientation of the house doesn't have any impact because all the modern and contemporary houses have an outdoor look, but 3% of the residents ensure that the location of some windows of their houses overlooks some internal courtyards, increasing the sense of privacy. The results of the field survey are seen in the following, **Fig. 5**.

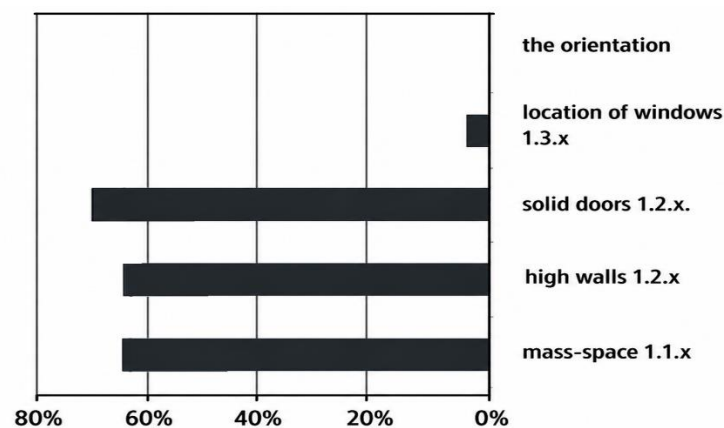


Figure 5. Distributing the answers of the residential participants to planning level indicators and their sense of privacy.

The residents indicated that there are other reasons responsible for their feeling of privacy at the planning level with the neighborhood at the physical level, which are:

A- The wide residential street: it enhances the sense of privacy because it means that the opposite neighbor does not overlook the house directly, and this appeared mostly in the preference of residents of houses after 2003, or in the desire for people who live in houses in a narrow residential street.

B- There is no neighbor opposite the house: it is one of the indicators of increasing privacy, which was indicated by residents of homes after 2003.

C- The residential nature of the neighborhood: The transformation of some modern houses in residential neighborhoods into commercial functions was an indication of the decline in the sense of privacy for the residents.

The residents pointed to other factors at the social level that enhance the sense of privacy in the neighborhood, which are:

-Reducing social interaction with neighbors: Most residents don't have any interaction with neighbors, and drawing official boundaries is a means of expressing privacy and not allowing others to interfere in the private affairs of the family.

-The polite nature of the neighbors: the social nature of the neighborhood is characterized by polite behaviors, and the absence of annoying phenomena among the neighbors increases the sense of privacy.

The research noted that reducing interaction with the neighbors and making it a factor in increasing privacy occurred because of the social changes that residential neighborhoods witnessed after 2003, the arrival of new residents in divided houses outside urban controls, and the effects of violence that made people not know each other and afraid of each other.

Second: The sense of privacy at the design level of the house means:

A-The arrangement of the spaces: The results showed that 83% of the Baghdadi residents indicated that separation between the public and private spaces of the family and the arrangement of spaces inside the house\on horizontal and vertical levels, are one of the main indicators to feel in privacy at their home .

B-Separation of the space depends on gender, the parents, and children: The results showed that 94% of the Iraqi residents have a separation between the parents' room and their children as well, and the separation between genders is one of the main indicators of privacy at their home. And this is related to the beliefs of the Islamic religion .

C-Functional definition of spaces: The results showed that 68% of the Iraqi residents indicate that the functional definition of spaces that don't overlap is one of the important factors affecting the sense of privacy at home. Due to the small spaces in homes after 2003, the reception space often overlaps with the living space, and the lack of separation between the public space for guests and the space for the family as a living room is an indicator of a decline in the sense of privacy. On the other hand, small architecturally designed houses were trying to achieve openness on the one hand, and space isolation on the other hand, a criterion for the residents' satisfaction. As the following example, **Fig. 6**.

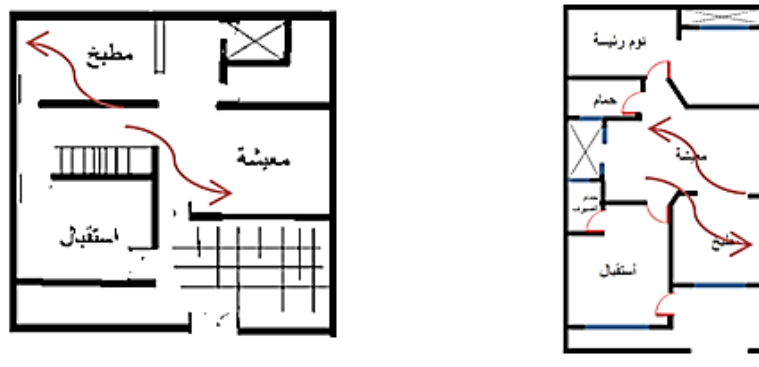


Figure 6. Examples of open plan arrangement in a ground floor plan in contemporary Baghdadi houses after 2003.

D-Personalization: The results showed that 59% of the Iraqi residents indicated that the personalization and building of the house according to the family's requirements and their participation in the design was an indication of the sense of privacy among the residents.

E-The existence of each individual's own space/Zoon/tim :The results of the questionnaire for the residents indicated that 91% of the residents indicated that having their own space means a sense of privacy. The researcher noted that any defect in these levels represents a defect in the resident's sense of privacy .

F: The entrance: The results showed that 74% of the residents used separations in the entrance by creating guest entrances and family entrances, increasing the sense of privacy in modern and contemporary houses as seen in Fig. 7. The results of design level indicators are as follows in Fig. 8.



Figure 7. A. The guest entrance and family entrance in the modern Baghdadi house before 2003 B. The guest entrance and family entrance in the contemporary Baghdadi house after 2003.

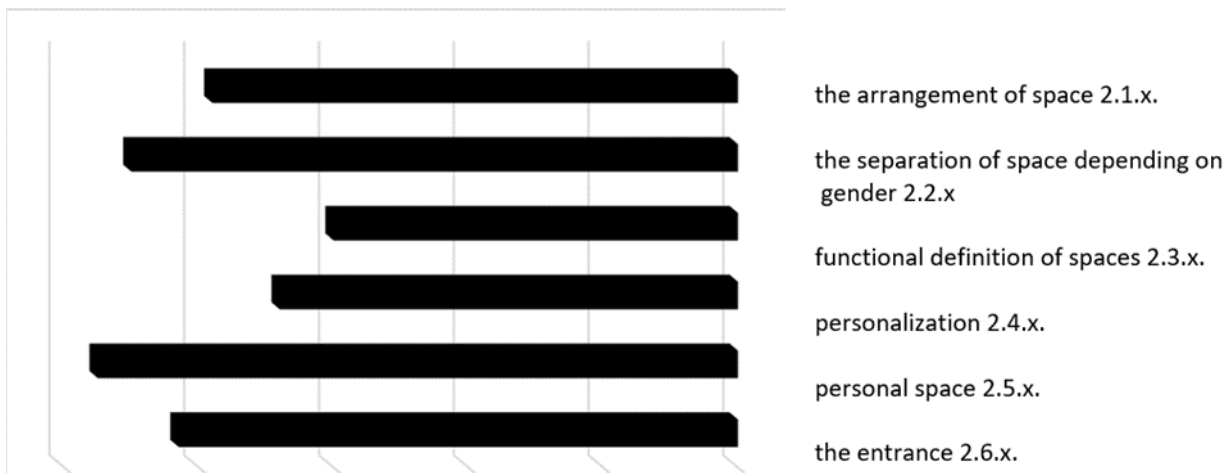


Figure 8. Distributing the answers of the residential participants to design level indicators and their sense of privacy.

G: The sense of privacy at the architectural detail level of the house 2.7.X: All the residents have privacy at the detail level in house design through Curtains, tinted glass, high walls, and high doors it appeared in post-2003 homes because of their proximity to the street and the neighbors' honor over it, or in the suffering of the residents of pre-2003 homes and their suffering from the neighbors' overlook over their outdoor courtyards and gardens, which was represented by the design details of most of the samples, represented by the shaded glass, and the drawn curtains most of the time. Painting some windows in extreme cases . The feeling of privacy at the level of detail was linked to the presence of curtains to prevent communication between the inside and outside, and the emphasis on high solid doors to enhance the sense of privacy. As for the level of shaded glass, despite its spread in



contemporary houses after 2003, it is subject to the influence of social phenomena and climatic effects.

At the level of detail, the curtains and doors represent the threshold between public and private spaces. The type of glass and the height of the walls are factors that change under the influence of social variables in society. The residents indicated that there are other reasons responsible for their feeling of privacy at the design level socially by living as an independent family. The researchers noted that the majority of the samples had independent families, but just 13% indicated that the sense of privacy meant living in an independent family, despite most of them not indicating its association with a sense of privacy except by referring to residents who had previously lived with an extended family and their suffering with their sense of privacy. Therefore, the field research confirmed that living as an independent family is linked with a sense of privacy due to constant striving.

Therefore, the privacy of the Iraqi user is affected by the physical requirements at the level of the house, and neighborhood, and the social requirements at the level of the family and neighborhood together, which shows the distribution of the factors that effect on the sense of privacy for Iraqi resident from the personal space of a person as a private space until the relationship with neighborhood as a public space. So, we can indicate the concept of privacy for Iraqi users in **Fig. 9**.

4. THE STATISTICAL ANALYSIS BY USING SPSS

Statistical analysis was used to support the results of the descriptive analysis and the checklist that was adopted. Binary logistic regression analysis was adopted because the dependent variable in this study is a binary variable limited to two categories (e.g., yes/no or true/not true). This type of analysis is used to estimate the probability of the phenomenon under study occurring in light of the influence of a set of independent variables, while also determining the strength and direction of this influence. A statistical significance level ($\alpha = 0.05$) was adopted to judge the significance of the results; the relationship is considered statistically significant when the value of (P) is less than 0.05, which calls for the rejection of the null hypothesis, while exceeding the value of (P) to this limit means that there is not enough statistical evidence to reject it. The statistical analysis supported the effect of the planning characteristics of the residential neighborhood on the sense of privacy, as shown in **Table 2**.

Table 2. The Statistical results of the planning level.

Variable (physical planning level)	Number	Privacy	Frequency	Significant
Present	27	Yes	55	0.006
		No	2	0.023
Absent	63	Kind of	33	0.99

The statistical analysis supported the effect of the design and detail characteristics of the residential house on the sense of privacy, as shown in **Table 3**.

Table 3. The Statistical results of the design level

Variable (Design level)	Number	Privacy	Frequency	Significant
Present	77	Yes	55	0.005
		No	2	0.2
Absent	13	Kind of	33	0.99

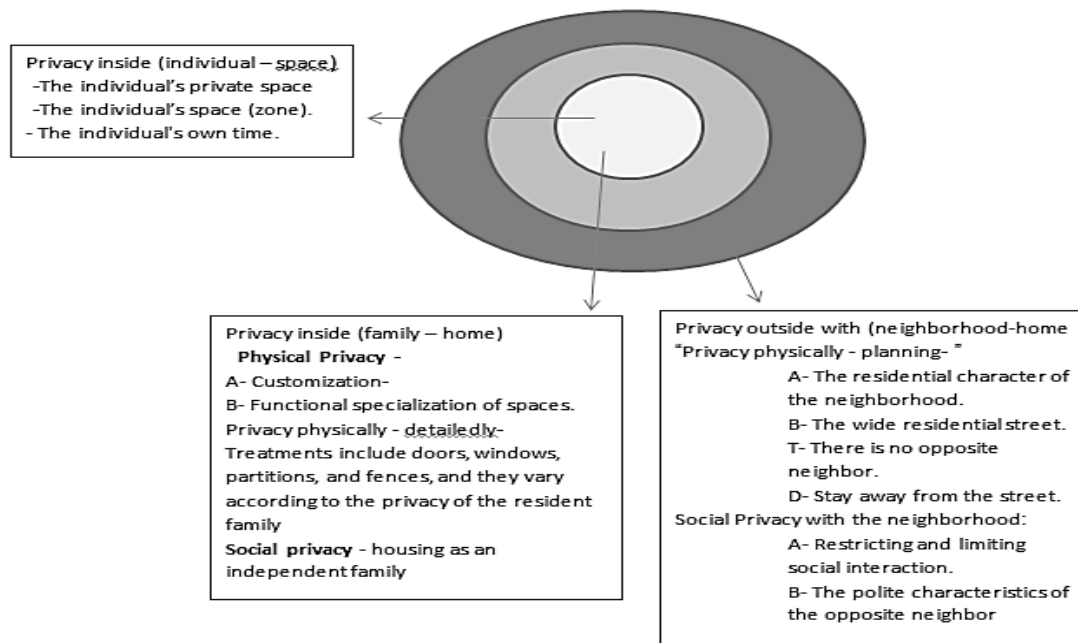


Figure 9. The level of privacy for Baghdadi residents.

Based on the analysis results, it was found that a clear and well-thought-out design level in a house is significantly and positively correlated with the sense of privacy, while the absence of such a level did not show a statistically significant effect. Therefore, the results support the hypothesis that design features are a key factor in enhancing privacy within the residential environment.

5. CONCLUSIONS

The results have indicated that privacy changes according to social and cultural variables in society. It is also affected by social factors represented by the nature of the resident family, as well as the nature of the residential group residing in the neighborhood. When a change occurs in one of these indicators, it will lead to a change in the aspects of privacy in the residential environment. In our case study in Baghdad, in the 1960s and 1970s, due to the influences of modernity, the Baghdadi house became more open. The contemporary houses in Baghdad in 2003 became more private because the residential neighborhoods had changed their social and cultural homogeneity due to the arrival of new residents from different residential neighborhoods and the effects of the violence that occurred after 2003, which indicates a decline in social security at the residential neighborhood level. Therefore, there is an increase in physical separation between the house and the residential neighborhood. This confirms the loss of social communication between the inside and the outside as one of the requirements of the residential environment. The privacy in a house before 2003 was part of the social fabric, but it increased after 2003 to the point of isolation and social separation due to factors such as the small size of the house, which altered the distribution of internal spaces and reduced openness to the outside world; the absence or very small size of the space separating the house from the street; and the height of the house to three or more stories. Privacy has transformed from a mechanism for maintaining family boundaries within the framework of the house and interaction with neighbors within the residential neighborhood to an isolated house that protects the house from the social



environment. The alienation and its elements, as indicated by the research, are represented by high walls, closed gates, and isolation from neighbors, resulting from social fear. This occurred as a result of the mixing of residential neighborhoods with strangers. The house was transformed into a "refuge" instead of being part of the social fabric.

Credit Authorship Contribution Statement

Amna Bassim Mohammed Salih contributed to building the Conceptualization of the research, data collection, methodology, data analysis, writing the draft of the paper, writing review and editing. Ghada Al-Slik contributed to the supervision in building, Conceptualization of the research, methodology, reviewing and editing, and Validation.

Declaration of Competing Interest

The authors declare that they have no known competing financial interests or personal relationships that could have appeared to influence the work reported in this paper.

REFERENCES

- Akram, O.K., Ismail, S., Utaberta, N., Yunos, M.Y.M., and Ariffin, N.F.M., 2015. The important values of architectural Baghdadi heritage. *Advances in Environmental Biology*, 9(24), pp. 46–53.
- Al Ishaqee, H. A. S., and Albazaz, E.A. 2019. The impacts of building contraventions and informal residential land subdivision on the quality of life in Baghdad. *In IOP Conference Series: Materials Science and Engineering*, 518(2), P. 022072. IOP Publishing <https://doi.org/10.1088/1757-899X/518/2/022072>.
- Al-Ani, H.A., 1995. Characteristics of the spatial organization of the dwelling and its relationship to the psychological characteristics of the resident. MSc. Thesis, Department of Architecture Engineering, University of Technology, Baghdad, Iraq
- Al-Assadi, F.I., Najah, F.T., Al-Saffar, I.M.A., 2022. Alienation in contemporary Iraqi architecture: The questions of space-time communication and style. *ISVS e-journal*, 9(5), pp. 387–407.
- Al-Beirouti, F., 1992. The architectural development of the house in Baghdad. Ph.D. Thesis, Department of Architecture Engineering, University of Baghdad, Baghdad, Iraq.
- Al-Hinkawi, W.S., 1993. The impact of the characteristics of spatial organization in the urban fabric on social interaction. MSc. Thesis, Department of Architecture Engineering, University of Technology, Baghdad, Iraq
- Al-Hinkawi, W.S., and Yousif, S.H., 2004. The privacy and isolation in the residential environment. *The Iraqi Journal of Architecture and Planning*, 4(1), pp. 176–196. <https://doi.org/10.36041/iqjap.v2i1.276>
- Ali, N., and AlKindy, S., 2021. Functional reuse of contemporary residential houses to private schools in Baghdad. *Al-Ustath Journal for Engineering Sciences*, 28(3), pp. 37–54. <https://doi.org/10.33261/jaar.2021.28.3.004>
- Al-Khafaf, Q.M., 1992. The Baghdadi House: An analysis of its past with reference to its future. Ph.D. Thesis, University of Glasgow, United Kingdom.
- Alobaydi, D., Albayati, R. and Albabely, S., 2024. Exploring the dynamics of accessibility and connectivity: a correlation analysis of the urban transition in AlKarkh, Baghdad. *In International*



Conference on Landscapes Across the Mediterranean, pp. 207-218. Cham: Springer Nature Switzerland. https://doi.org/10.1007/978-3-032-17498-7_24

Alobaydi, D., Bakarman, M.A., and Obeidat, B., 2016. The impact of urban form configuration on the urban heat island: The case study of Baghdad, Iraq. *Procedia Engineering*, 145, pp. 820–827. <https://doi.org/10.1016/j.proeng.2016.04.106>

Alobaydi, D.M., 2017. A study of the urban morphological processes of Baghdad: Implications and guidelines for urban design and planning in Middle Eastern cities. Ph.D. Thesis, University of Kansas.

Al-Saaidy, H.J., and Alobaydi, D., 2021. Studying street centrality and human density in different urban forms in Baghdad, Iraq. *Ain Shams Engineering Journal*, 12(1), pp. 1111–1121. <https://doi.org/10.1016/j.asej.2020.06.008>

Al-Sadkhan, A., and Aladdin, H., 2013. The transformations of the Iraqi residential house in the first decade of the twenty-first century. MSc. Thesis, Department of Architecture Engineering, University of Baghdad, Baghdad, Iraq.

Alsaffar, N.H., and Alobaydi, D., 2023. Studying street configurations and land uses in downtown Baghdad. In: *AIP Conference Proceedings*, 2651(1), P. 020064. <https://doi.org/10.1063/5.0105420>

Al-Thahab, S.M., and Abdelmonem, M.G., 2014. Between tradition and modernity: Determining spatial systems of privacy in the domestic architecture of contemporary Iraq. *ArchNet-IJAR*, 8(3), pp. 238–250. <https://doi.org/10.1108/OHI-01-2016-B0010>

Dhumad, K.F., 2017. The impact of legislative factor in the identity of modern residential urban in Iraq. *Journal of Engineering*, 23(2), pp. 1–19. <https://doi.org/10.31026/j.eng.2017.02.08>

Dhumad, K.F., 2023. An assessment of informal housing policies in Iraq. *ISVS e-journal*, 10(9), pp. 198–209.

Eyüce, A., 2012. Interdependence of traditional house form and settlement pattern. *Intercultural Understanding*, 2, pp. 17–24. <https://doi.org/10.14993/00000834>

Fuchs, C., 2011. Towards an alternative concept of privacy. *Journal of Information, Communication and Ethics in Society*, 9(4), pp. 220–237. <https://doi.org/10.1108/14779961111191039>

Gupta, H., 2019. Staging Baghdad as a problem of development. *International Journal of Islamic Architecture*, 8(2), pp. 337–361. https://doi.org/10.1386/ijia.8.2.337_1

Huweish, M.A.N., 1988. *Modern Architecture in Iraq: Comparative Analysis in Architecture and Planning*. Baghdad: House of Cultural Affairs.

Khasir, A.S.H., and Nasser, R.S., 2010. Modern architecture in the planning of the city of Baghdad. *Planning and Development Journal*, 22(1), pp. 94–123.

Khayat, M.A.B., and Khaznadar, B., 2010. Formal characteristics of vernacular architecture in Erbil city and other Iraqi cities. *The Iraqi Journal of Architectural Engineering*, (19), pp. 50-71.

Kuba, B.K., 2011. The impact of society on architecture MSc. Thesis, Department of Architecture Engineering, University of Baghdad, Baghdad, Iraq.

Pieri, C., 2005. Baghdad 1921–1958: Reflections on history as a strategy of vigilance. *Bulletin of the Royal Inter-Faith Studies*, 8(1–2), pp. 69–93.

Post, R.C., 2000. Three concepts of privacy. *Georgetown Law Journal*, 89, pp. 2087–2098.



- Qaradagy, A., 2021. The effect of traditional house patterns on changing privacy treatments: Traditional houses in the city of Sulaymaniyah. *Sulaimani Journal for Engineering Sciences*, 8(1), pp. 63–85. <https://doi.org/10.17656/sjes.10148>
- Qawasmeh, N., 2019. A comparative study of privacy in Palestinian housing: case study, Hebron City. MSc. Thesis, An-Najah National University, Nablus, Palestine.
- Rapoport, A., 1969. *House Form and Culture*. Prentice-Hall, Englewood Cliffs, NJ.
- Salih, A.B.M., and Al-Slik, G. 2025. The safe house as a sustainable home: the Baghdadi house as a case study. In *IOP Conference Series: Earth and Environmental Science*, 1507(1), P. 012017. IOP Publishing. <https://doi.org/10.1088/1755-1315/1507/1/012017>
- Tomah, A.N., Ismail, H.B., and Abed, A., 2016. The concept of privacy and its effects on residential layout and design: Amman as a case study. *Habitat International*, 53, pp. 1–7. <https://doi.org/10.1016/j.habitatint.2015.10.029>
- Wang, D.G., Lyu, Q.Y., Wu, Y.F., and Fan, Z.Q., 2019. The characteristic of regional differentiation and impact mechanism of architecture style of traditional residence. *Journal of Natural Resources*, 34(9), pp. 1864–1885. <https://doi.org/10.31497/zrzyxb.20190906>
- Yossif, S.H., 2002. The duality of public and private in the Iraqi home. MSc. Thesis, Department of Architecture Engineering, University of Technology, Baghdad, Iraq.

التحولات الزمنية في فهم الخصوصية: وجهات نظر مستخدمي منازل في بغداد خلال فترتين مختلفتين: حالات دراسية في أحياء منتخبة

أمنة باسم محمد صالح*، غادة السلق

قسم هندسة العمارة، كلية الهندسة، جامعة بغداد، بغداد، العراق

الخلاصة

يُعدّ السكن مسألة أساسية تتعلق بالإنسان، فعلى مرّ العصور، كان على الإنسان أن يسكن في مكان ما ويبنى بيته. ونظرًا لاختلاف الأنماط والتصاميم المعمارية في جميع أنحاء العالم، إلا أنّ جميعها تشترك في سمة الخصوصية كعنصر أساسي في حياة الإنسان داخل مسكنه. ويشهد الطراز المعماري للمسكن في أي مكان تغييرًا في أنماطه وتصاميمه تبعًا للظروف والمتغيرات التي تحدث فيه، لكن يبقى كل مكان محتفظ بخصائصه المميزة. وتهدف هذه الدراسة إلى بحث التحول الزمني في فهم الخصوصية خلال القرنين العشرين والحادي والعشرين في منازل بغداد، وما هي العناصر المادية المرتبطة بمعنى الخصوصية؟ وقد حلت منهجية البحث مفهوم الخصوصية لاستخلاص مؤشرات البحث التي سيتم تطبيقها على 49 عينة من منازل مفردة في أحياء منتخبة خلال فترتين مختلفتين من القرنين العشرين والحادي والعشرين. وقد تم جمع البيانات من خلال مسوحات بصرية والملاحظة باستخدام قائمة التحقق التي أعتمدها الباحثون في المقابلات التي تمت مع 90 مستخدم يعيشون في تلك الأنواع والأنماط المعمارية. أشارت النتائج إلى أن الخصوصية تتمثل في معالجةً فيزيائيةً متوازنةً تتداخل مع الاعتبارات الاجتماعية على المستوى التخطيطي والتصميمي، بدءًا من تصميم المساحات وصولًا إلى أدق التفاصيل، مما يؤدي إلى تنظيم تفاعلات الفرد مع أسرته من جهة، ثم تفاعلات الأسرة مع الآخرين، ولا سيما الجيران من جهة أخرى. ولكلٍ من هذه التفاعلات متطلباته الخاصة على المستوى التصميمي والتخطيطي. وأظهرت النتائج زيادةً في سمات الخصوصية، وتزايدًا في العزلة في المنازل البغدادية المعاصرة (بعد عام ٢٠٠٣)، نتيجةً لتغير الطبيعة الاجتماعية لسكان الحي، وتراجع الشعور بالأمان. ولاحظ البحث وجود مؤشرات تخطيطية ارتبطت بزيادة الشعور بالخصوصية، تمثلت في عرض الشارع السكني، والطابع السكني للحي، وعدم وجود جارٍ مقابل للمنزل.

الكلمات المفتاحية: العزلة الاجتماعية، خصوصية، مسكن، منزل بغداد، منزل لعائلة واحدة.